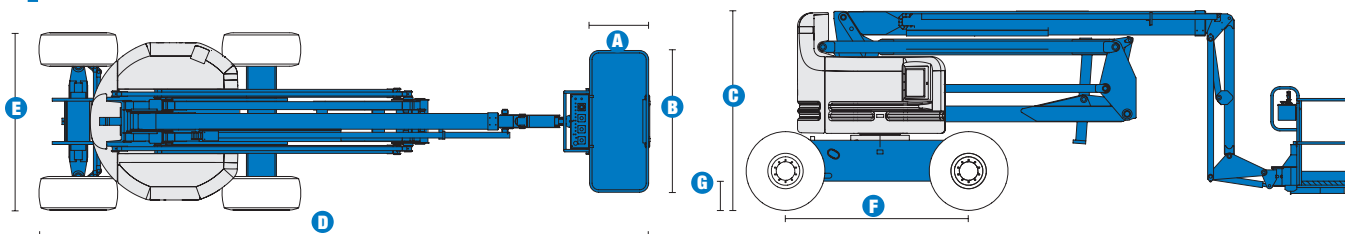


Specifications



| MODEL | Z™-60/34 | |
|--|------------------|-----------------|
| MEASUREMENTS | US | Metric |
| Working height maximum* | 66 ft 4 in | 20.39 m |
| Platform height maximum | 60 ft 4 in | 18.39 m |
| Horizontal reach maximum | 36 ft 3 in | 11.05 m |
| Up and over clearance maximum | 27 ft | 8.23 m |
| A Platform length - 6 ft / 8 ft model | 2 ft 6 in / 3 ft | .76 m / .91 m |
| B Platform width - 6 ft / 8 ft model | 6 ft / 8 ft | 1.83 m / 2.44 m |
| C Height - stowed | 8 ft 10 in | 2.69 m |
| D Length - stowed | 26 ft 9 in | 8.15 m |
| E Width | 8 ft 1 in | 2.46 m |
| F Wheelbase | 8 ft 3 in | 2.51 m |
| G Ground clearance - center | 1 ft 4 in | .41 m |

| PRODUCTIVITY | | |
|--------------------------------|----------------------|----------|
| Lift capacity | 500 lbs | 227 kg |
| Platform rotation | 180° | |
| Vertical jib rotation | 90° | |
| Turntable rotation | 360° continuous | |
| Turntable tailswing | zero | |
| Drive speed - stowed | 3.0 mph | 4.8 km/h |
| Drive speed - raised** | 0.68 mph | 1.1 km/h |
| Gradeability - 2WD - stowed*** | 25% | 25% |
| Gradeability - 4WD - stowed*** | 40% | 40% |
| Turning radius - inside | 10 ft | 3.00 m |
| Turning radius - outside | 19 ft 11 in | 6.07 m |
| Controls | 12 V DC proportional | |
| Tires | 385/65 D19.5, 12 ply | |

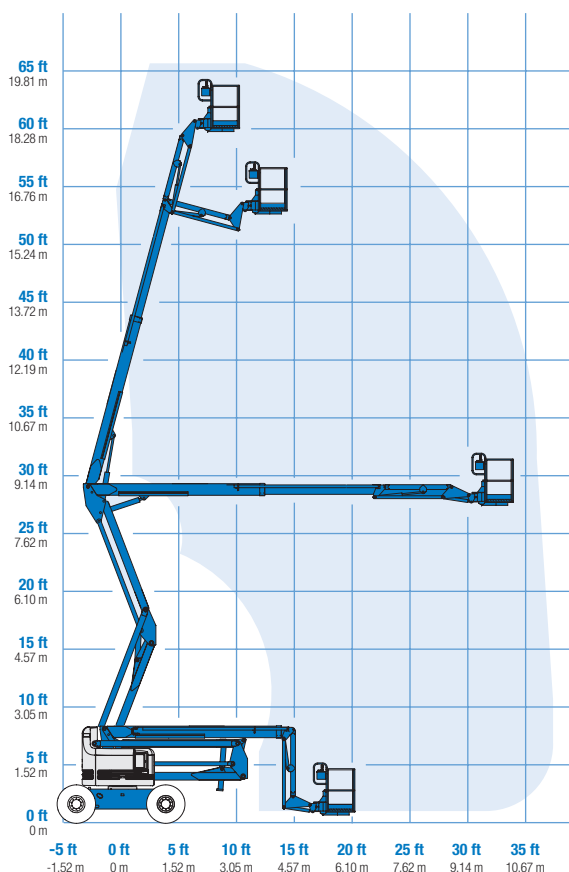
| POWER | |
|-------------------------|--|
| Power source | Ford DSG-423 4 cylinder gas/LPG 75 hp (56 kW) Deutz F3L 2011 3 cylinder diesel 48 hp (35.8 kW) Perkins 404C-22 4 cylinder diesel 51 hp (38.0 kW) |
| Auxiliary power unit | 12 V DC |
| Hydraulic tank capacity | 45 gal 170.3 L |
| Fuel tank capacity | 20 gal 75.7 L |

| WEIGHT**** | |
|------------|----------------------|
| | 22,520 lbs 10,215 kg |

STANDARDS COMPLIANCE ANSI A92.5, CSA B354.4, CE Compliance, AS 1418.10, PB-10-611-03

* The metric equivalent of working height adds 2 m to platform height. U.S. adds 6 ft to platform height.
 ** In lift mode (platform raised), the machine is designed to operate on firm, level surfaces only.
 *** Gradeability applies to driving on slopes. See operators manual for details regarding slope ratings.
 **** Weight will vary depending on options and/or country standards.

RANGE OF MOTION Z™-60/34



Features

EASILY CONFIGURED TO MEET YOUR NEEDS

PLATFORM OPTIONS

- Steel 6 ft (1.83 m) (standard)
- Steel 8 ft (2.44 m)
- Steel 6 or 8 ft (1.83 or 2.44 m) tri-entry

JIB

- 6 ft (1.83 m) jib boom

POWER OPTIONS

- Ford gas/LPG 82 hp (61.1 kW)
- Deutz diesel 48 hp (35.8 kW)
- Perkins diesel 51 hp (38 kW)

DRIVE OPTIONS

- 2WD
- 4WD

AXLE OPTIONS

- Oscillating (standard on 4WD)
- Non-oscillating

TIRE OPTIONS

- Rough terrain air-filled (standard)
- Rough terrain foam-filled
- Rough terrain non-marking (air or foam-filled)
- High flotation air-filled
- Sealant treated air-filled

STANDARD FEATURES

MEASUREMENTS

- 66 ft 4 in (20.39 m) working height
- 36 ft 3 in (11.05 m) horizontal reach
- 27 ft (8.23 m) up and over clearance
- Up to 500 lb (227 kg) lift capacity

PRODUCTIVITY

- Self-leveling platform
- Hydraulic platform rotation
- Fully proportional controls
- Drive enable
- AC power to platform
- Horn
- Hour meter
- Tilt alarm
- 360° continuous turntable rotation
- Locking turntable covers
- Zero tailswing
- Positive traction drive

POWER

- All engines are emissions compliant
- 12 V DC auxiliary power
- Engine protection package
- Anti-restart engine protection
- Auto engine fault shutdown
- Deutz intake air heater



OPTIONS & ACCESSORIES

PRODUCTIVITY

- Platform swing gate
- Half mesh platform inserts with swing gate
- Platform top auxiliary rail
- **Arc Pro 275™ Heavy-Duty Welder package**
- Welder Ready package
- Weld leads to platform
- Hydraulic oil cooler
- Air line to platform
- Arctic hydraulic oil
- Arctic hose option (boom hoses only)
- Deluxe aircraft protection package
- Basic hostile environment kit
- Deluxe hostile environment kit
- Thumb rocker steer
- Tool tray
- Fluorescent tube caddy
- Pipe cradle (pair)
- Alarm package
- Panel cradle package
- Platform work lights
- Front driving lights
- Lockable platform control box covers

POWER

- Engine gauge package
- AC Generator Packages (2500 or 3000 watts)
- Cold Start Packages
- GS/LPS and DS UL558 fire protection rating
- Diesel scrubber/spark arrestor
- Diesel spark arrestor muffler
- LPG tank 33.5 lb (15.19 kg) capacity
- Additional LPG carrier with tank

Genie United States

18340 NE 76th Street
P.O. Box 97030
Redmond, Washington 98073-9730

Telephone **(425) 881-1800**
Toll Free in USA/Canada **800-536-1800**
Fax (425) 883-3475

Genie Europe

The Maltings
Wharf Road
Grantham NG31 6BH
U.K.

Telephone **+44 (0)1476 584333**
Fax +44 (0)1476 584334

Email: infoeurope@genieind.com

Distributed By:



Kevin Keeter • 817.271.0405

For further information, please contact your local distributor or the Genie Industries sales office listed. Product specifications are subject to change without notice or obligation. The photographs and drawings in this brochure are for illustrative purposes only. Refer to the appropriate Operator's Manual for instructions on the proper use of this equipment. Failure to follow the appropriate Operator's Manual when using our equipment or to otherwise act irresponsibly may result in serious injury or death. Prices and specifications subject to change without notice. The only warranty applicable is the standard written warranty applicable to the particular product and sale. Genie makes no other warranty, expressed or implied. Products and services listed may be trademarks, service marks or trade-names of TEREX Corporation and/or its subsidiaries in the USA and other countries and all rights are reserved. Copyright © 2006 Genie Industries, Inc. "Genie" is a Registered Trademark of Genie Industries, Inc. in the USA and many other countries. Genie is a TEREX Company.